

SHOWBIZ®

For stage, studio, film and television lighting.



High Lumen Biax Cinema Lamp

HLBX Cinema lamps:

- designed for TV, film and still photography applications
- color corrected
- offer a soft diffused light
- color matched with Quartz Halogen and HID light sources
- operate on electronic flicker free ballasts
- perfect for the new smaller light weight fixtures
- fully dimmable to 1% with ANSI approved dimming systems

GE Cinema 32 & 55 HLBX

Lamp Description	Application	Product Code	Watts	Carton Quantity
F55BX/CINEMA32	Indoor	15811	55	10
F55BX/CINEMA55	Daylight	15814	55	10
F32BX/CINEMA32	Indoor	15816	32	10
F32BX/CINEMA55	Daylight	15819	32	10

GE Cinema 32 & 55

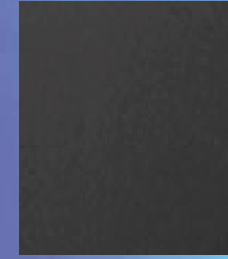
Lamp Description	Product Code	Application	Watts	Carton Quantity
F20T12/CINEMA32	15558	Indoor	20	24
F20T12/CINEMA55	15710	Daylight	20	24
F20T12/CINEMA32/HO	15712	Indoor	35	24
F20T12/CINEMA55/HO	15713	Daylight	35	24
F30T12/CINEMA32	15714	Indoor	30	24
F30T12/CINEMA55	15715	Daylight	30	24
F40T12/CINEMA32	47857	Indoor	40	30
F40T12/CINEMA55	47864	Daylight	40	30
F40T12/CINEMA32/HO	15716	Indoor	75	30
F40T12/CINEMA55/HO	15717	Daylight	75	30
F72T12/CINEMA32/HO	15718	Indoor	85	15
F72T12/CINEMA55/HO	15719	Daylight	85	15
F96T12/CINEMA32/HO	15720	Indoor	110	15
F96T12/CINEMA55/HO	15721	Daylight	110	15
F15T8/CINEMA32	15722	Indoor	15	24
F15T8/CINEMA55	15723	Daylight	15	24
F17T8/CINEMA32	15724	Indoor	17	24
F17T8/CINEMA55	15725	Daylight	17	24
F32T8/CINEMA32	47866	Indoor	32	36
F32T8/CINEMA55	47869	Daylight	32	36

GE Cinema 32 & 55 covRguard™

Lamp Description	Product Code	Application	Watts	Carton Quantity
F20T12/CINEMA32/COVG	15766	Indoor	20	24
F20T12/CINEMA55/COVG	15774	Daylight	20	24
F20T12/CINEMA32/HO/COVG	15775	Indoor	35	24
F20T12/CINEMA55/HO/COVG	15776	Daylight	35	24
F30T12/CINEMA32/COVG	15779	Indoor	30	24
F30T12/CINEMA55/COVG	15780	Daylight	30	24
F40T12/CINEMA32/COVG	47876	Indoor	40	30
F40T12/CINEMA55/COVG	47877	Daylight	40	30
F40T12/CINEMA32/HO/COVG	15782	Indoor	75	30
F40T12/CINEMA55/HO/COVG	15783	Daylight	75	30
F72T12/CINEMA32/HO/COVG	15785	Indoor	85	15
F72T12/CINEMA55/HO/COVG	15786	Daylight	85	15
F96T12/CINEMA32/HO/COVG	15784	Indoor	110	15
F96T12/CINEMA55/HO/COVG	15788	Daylight	110	15
F15T8/CINEMA32/COVG	15800	Indoor	15	24
F15T8/CINEMA55/COVG	15801	Daylight	15	24
F17T8/CINEMA32/COVG	15806	Indoor	17	24
F17T8/CINEMA55/COVG	15810	Daylight	17	24
F32T8/CINEMA32/COVG	47881	Indoor	32	36
F32T8/CINEMA55/COVG	47882	Daylight	32	36

Cinema Fluorescent 32 & 55 Lamps

For your best lighting performance.



For complete product information, visit the GE Website at www.GELighting.com

imagination at work.



GE Lighting

SHOWBIZ Cinema Fluorescent 32 & 55 lamps

When the creative process depends on a reliable lighting source.

For your best lighting performance GE Cinema 32 and 55 fluorescent lamps are the latest addition to the widely accepted GE SHOWBIZ® Stage/Studio product line. State of the art research and development by GE Lighting and their Six Sigma process, brings the latest technology and the highest production standards to these Cinema lamps.

Lamps that deliver the reliability, reproducibility and spectral sensitivity that the entertainment industry demands.

The GE SHOWBIZ line of lamps... performance tested, performance proven!

- Quartzline Halogen**
- CSR & CSD Metal Halide**
- Low Voltage & High Performance Halogen**
- Cinema covRguard™**
- HPL High Performance**



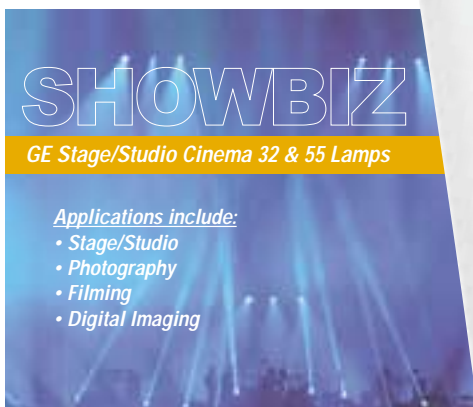
GE Lighting

High CRI (Color Rendering Index)

Traditional fluorescent lamps have not been widely used in photography and film making because of relatively low CRI and the prominent green spike found in typical fluorescent phosphors. GE Lighting Cinema 32 and 55 lamps have corrected these deficiencies with products that now have a CRI of 95 (out of 100 max.) and colors that respond to the spectral sensitivity curves of film and electronic imaging media.

Chromaticity

The Cinema 32 has a chromaticity of X=.415 and Y=.337 with a CRI of 93. The Cinema 32 mixes well with both incandescent and quartz halogen light sources without color correction. The Cinema 55 is a broad band spectrum daylight lamp with a chromaticity of X=.306 and Y=.315 and a CRI of 95. The Cinema 55 mixes well with ambient daylight and short arc discharge HID light sources without color corrections.



Color bases for easy identification:
Gold - 3200K; Blue - 5500K



covRguard™

GE Cinema 32 and 55 are sealed for your protection.

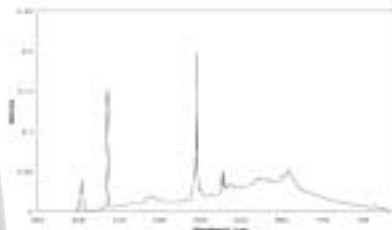
GE Cinema 32 and 55 offer the option of GE's exclusive covRguard shatter resistance that helps contain glass fragments if the lamps are broken. Reducing the possibility of glass related injuries to irreplaceable talent, damage to expensive sets, contamination of delicate equipment or missing critical deadlines. GE's covRguard process wraps the Cinema lamps in a full 15 ml thick casing of GE's exclusive Lexan™ shield that helps contain the

glass, phosphor and chemicals if the lamp is broken. Unlike other shatter-resistant lamps, GE's covRguard lamps require no assembly.

The GE covRguard process also offers excellent UV blocking. covRguard blocks 98% of the UV that is normally transmitted from an unprotected fluorescent lamp - all UVC, all UVB and most UVA. This is critical for protecting expensive sets and wardrobe from the fading effects of UV exposure.

The GE covRguard process offers maximum protection with minimum light loss... the lowest loss of initial light of other shielded products.

Spectral Output - Cinema 32



Spectral Output - Cinema 55

