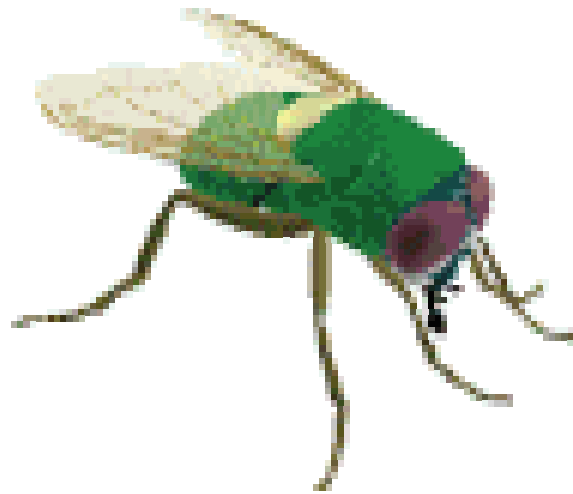


GE  
Lighting

# GE UVA Lamps

Blacklight Compact Biax™ and  
Linear Fluorescent Lamps

Using UV to attract the insects you don't want to see



GE imagination at work

GE's new BL lamp range are designed to match the insects vision spectrum for optimum attracting power. The new lamps from GE are available in a wide range of lamp types. They can be used on new and existing equipment

## Benefits

- UV output in the range of 315-400 nm
- Effective in attracting insects
- Standard Compact outline
- Long useful life
- Wide range

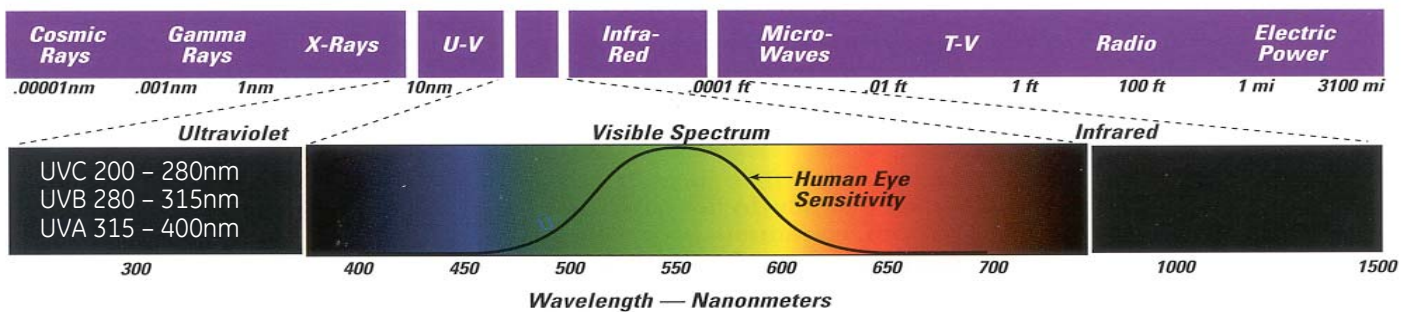
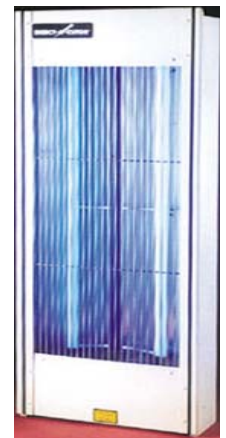


## Flying Insect Control - Applications

Blacklight tubes are used to attract flying insects towards fixtures that electrocute or trap the insects.

Extensively used in:

- Food processing plants
- Supermarkets
- Butchers / Bakeries
- Restaurants
- Hospitality



## Technology

Blacklight lamps range from 315 - 400 nm in the electromagnetic spectrum. Blacklight lamps consist of a regular fluorescent lamp tube with a special phosphor coating on the lamp that emits in the UV-A range. These phosphors are made with rare earth components which enables the lamp last over a complete insect season.

## Lamp Range

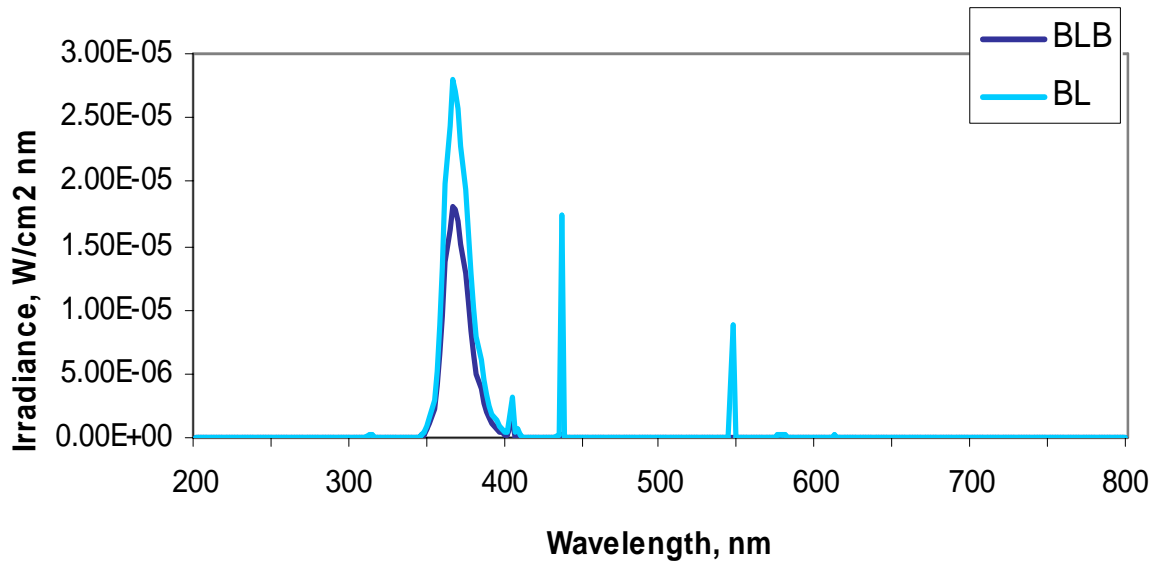
As one of the largest lamp manufacturers in the world, GE brings you the very best in product innovation, reliability and quality. Using extensive knowledge, we offer our customers a comprehensive portfolio of blacklight UV-A emitting lamps.

### UVA Lamp Range

Product Code	Description	Pack Size	Type	Cap	Length Max(mm)	Nominal Power (W)	Nominal Lamp Voltage (V)	Nominal Lamp Current (mA)	Peak Wavelength (nm)	Initial UVA Irradiance <sup>1</sup> (mW/cm <sup>2</sup> @ 20cm)	Useful Life (hours)
<b>Biax TM Electronic 2 pin Internal Starter</b>											
42935	F9BX BL G23	10	Blacklight	G23	145	9	60	180	368	440	5000
42936	F11BX BL G23	10	Blacklight	G23	215	11	91	155	368	670	5000
42937	F13BX BL GX23	10	Blacklight	GX23	170	13	59	285	368	630	5000
<b>Biax TM D 2 pin Internal Starter</b>											
42938	F26DBX BL G24d-3	10	Blacklight	G24d-3	160	26	105	325	368	630	5000
<b>Biax TM L 4 pin External Starter Required</b>											
42939	F24BX BL 2G11	10	Blacklight	2G11	320	24	75	300	368	980	5000
42940	F36BX BL 2G11	10	Blacklight	2G11	415	36	90	360	368	1280	5000
42941	F55BX BL 2G11	10	Blacklight	2G11	535	55	101	550	368	1630	5000
<b>Linear and U Lamp BL</b>											
16941	F15T8/BL 350	25	Blacklight	G12	452	15	55	305	368	510	7500
35884	F15T8/BL	24	Blacklight	G13	452	15	55	305	368	510	5000
10244	F20T12/BL	24	Blacklight	G13	604	20	57	380	368	510	5000
10526	F40T12/BL	24	Blacklight	G13	1214	40	101	430	368	575	5000
40537	F40BL/U/3	12	Blacklight	G13	572	40	103	420	368	575	5000

## Lamp Specifications

### Spectral Power Blacklight, Blacklight Blue



# Lamp Specifications (maximum dimensions)

Description	A	B	C	D	G	H	Base	Fig.
F15T8/BL	437.4	444.5	451.6	27.9			G13	4
F20T12/BL	589.8	596.9	604.0	40.4			G13	4
F40T12/BL	1199.4	1206.5	1213.6	40.4			G13	4
F40/BL/U/6	22.53	3.63					G13	5
F24BX/BL			40.0		20	320.0	2G11	1
F36BX/BL			40.0		20	415.0	2G11	1
F55BX/BL			40.0		20	535.0	2G11	1
F9BX/BL			28.0		13	145.0	G23	2
F11BX/BL			28.0		13	215.0	G23	2
F13BX/BL			28.0		13	170.0	GX23	2
F26DBX/BL			28.0		28	170.0	G24d-3	3

Fig. 1

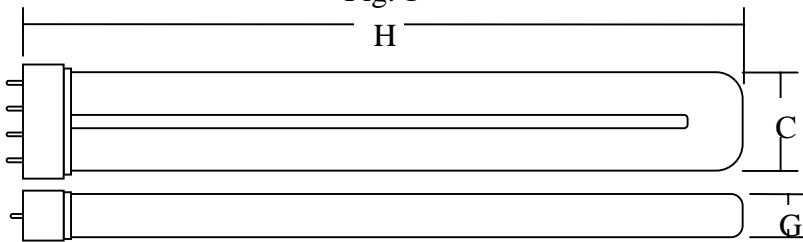


Fig. 2

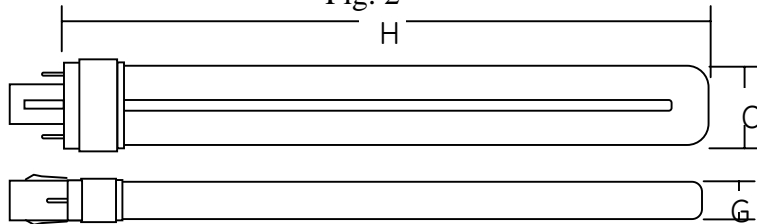


Fig. 3

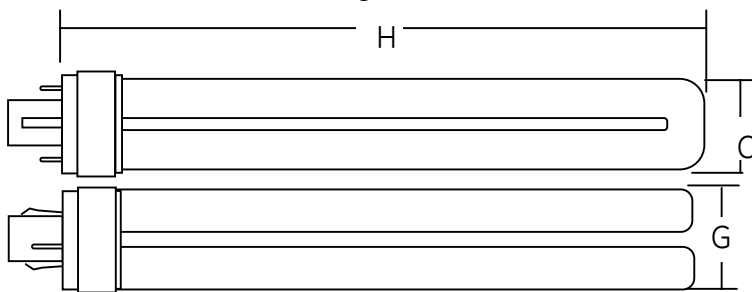


Fig. 4

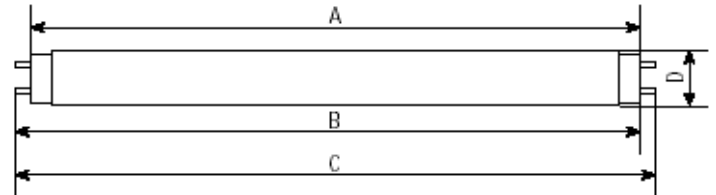
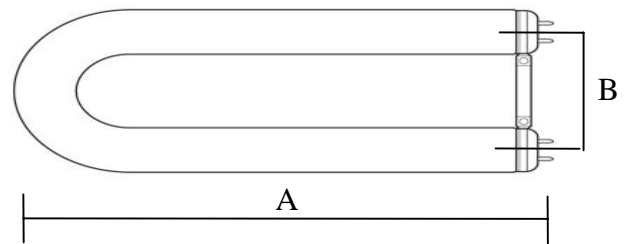


Fig. 5



WWW.GELighting.com

© General Electric Company (USA) 2004

GE and General Electric are both registered trademarks

of the General Electric Company, USA

GE Lighting is constantly developing and improving its products. For this reason, all product descriptions in this brochure are intended as a general guide, and we may change specifications time to time in the interest of product development, without prior notification or public announcement. All descriptions in this publication present only general particulars of the goods to which they refer and shall not form part of any contract. Data in this guide has been obtained in controlled experimental conditions. However, GE Lighting cannot accept any liability arising from the reliance on such data to the extent permitted by law.

UVA Marketing – June 2006