

Product Features

- PICMG 2.11 R1.0 Compliant Products
- Universal AC Input Models (90-264 VAC with Active PFC)
- 48 VDC Input Models (36 ~ 72 VDC Input Range)
- UL, CUL & TUV Safety Certifications
- Active Current share for Parallel Operation
- Operation up to 70°C
- Hot-Swap / N+1 Redundant Operation



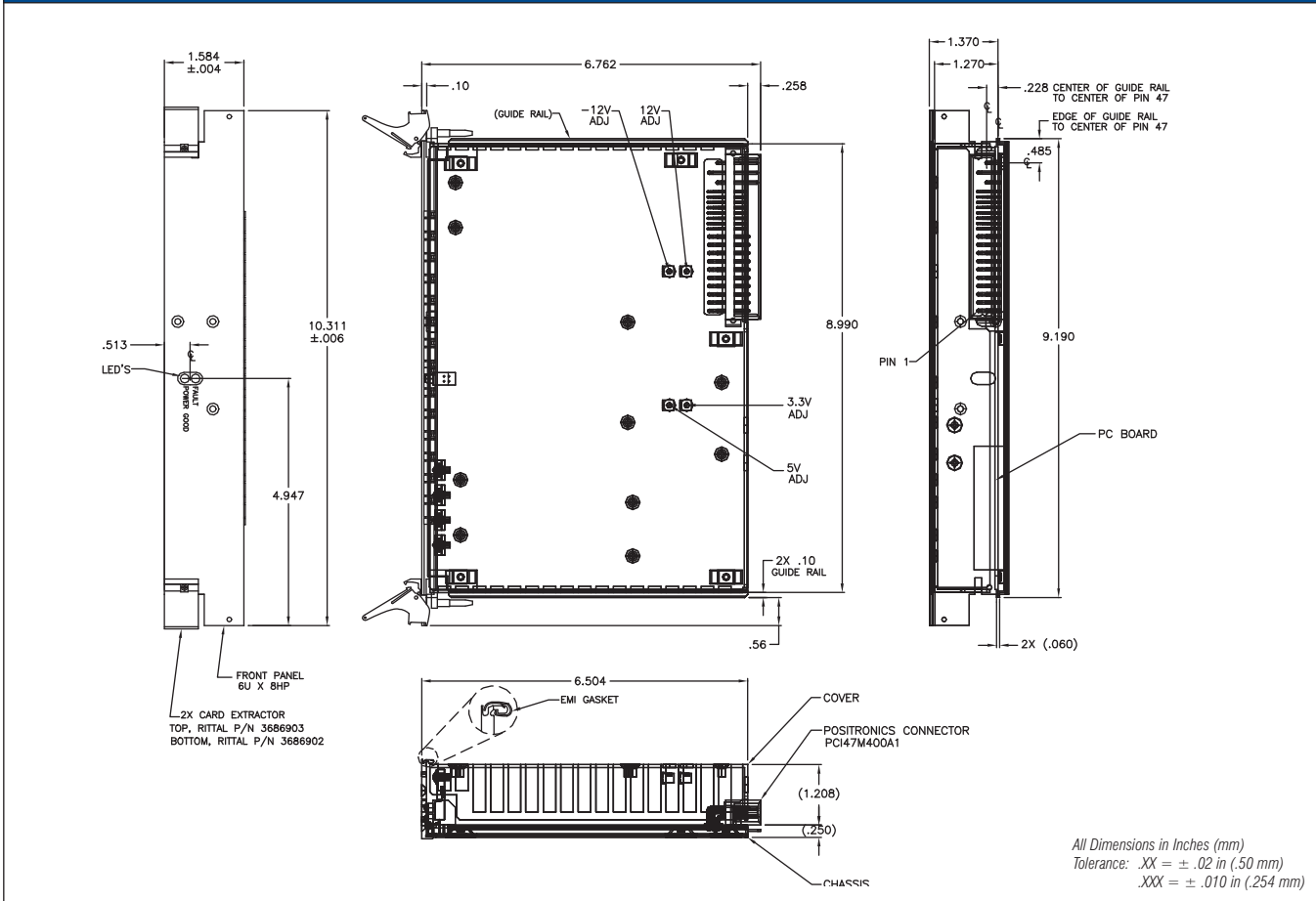
FEATURES	BENEFITS
No Minimum Load Required	Eliminates the need for preload on system backplane
Active Current Share	Increased M.T.B.F, Offers system scalability
Compact PCI 3U x 8 HP Package	Compatible with Industry Standard PICMG 2.11 Systems
Available in AC or DC Input Models	Single source for both versions

KEY MARKET SEGMENTS & APPLICATIONS	
■ Communications	■ Industrial Applications
■ Servers and Hubs	■ Test Equipment
■ Broadband Switches	■ Medical Instrumentation
■ Computer Peripherals	

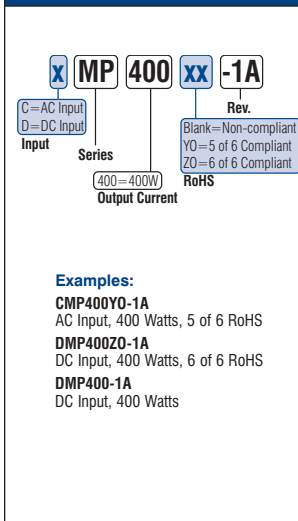
SPECIFICATIONS	400 Watt Compact PCI Switching Power Supplies With Universal AC or 48 VDC Input	
	CMP400	DMP400
Output Configuration	CMP400	DMP400
Input Range	Universal AC Input (90-264) with Active PFC	48 VDC Input (Ranging from 36~72 VDC)
Power Factor	0.99 Typical @ 230 VAC Operation	-
Inrush Current	30A @ 120 VAC / 60A @ 240 VAC Cold Start, max.	40A max @ 48 VDC
Efficiency	70% typical at 110VAC, 74% typical at 220VAC (Full Load)	70% typical at 48VDC (Full Load)
V1 Output	+5V @ 50A	+5V @ 50A
V2 Output	+3.3V @ 50A	+3.3V @ 50A
V3 Output	+12V @ 12A	+12V @ 12A
V4 Output	-12V @ 4A	-12V @ 4A
Input Transient Protection	IEC 1000-4-5 level 3, IEC10004-44 level 2, IEEE-578	
EMI	CISPR 22 class A / FCC part 15 class A	
Line Regulation	±2% All Outputs (maximum)	
Load Regulation	±2% All Outputs (maximum)	
Output Ripple & Noise	50mV or 1% pk-pk maximum, whichever is greater	
Overload Protection	Outputs are protected against overload and short circuit. Reset by cycling input power	
Over Voltage Protection	All outputs are set at 115-130% of nominal. Reset by cycling input power	
Operating Temperature	0°C to 50°C at rated output power, derate 2.5% per °C up to 70°C	
Cooling	Requires 400 linear feet/minute for full power operation	
Output Power Derating Signal	TTL Low signal when power supply temperature is out of specified limit	
Remote Sense	On V1 & V2, Compensates for voltage drop of up to 0.5V	
Remote Enable	TTL High or Open = Power supply OFF, DRIVE Low to Enable	
Remote Inhibit	TTL High or Open = Power supply ON, DRIVE Low to Disable	
Current Share	V1 / V2 / V3 Outputs only, +/-10% accuracy	
Power Fail Signal	Signal goes low after input / output failure	
LED Indicators	Green LED indicates Power Good. Amber LED indicates Power Fail	
Shock & Vibration	MIL STD-810D	
Weight	4.0 pounds	
Dimensions	6U x 6.762" x 8HP (10.311H x 6.762L x 1.584W")	
Safety Approvals	UL/cUL60950, CE Mark (LVD) TUV	

Specifications listed assume 25°C Ambient Operating Temperature and Full Load Operation unless otherwise specified. This product is qualified for use in OEM equipment and is not appropriate for stand-alone operation. The information contained within this specification is believed to be true and correct at the time of publication, however, Cherokee International accepts no responsibility for consequences arising from printing errors or inaccuracies. The information and specifications contained herein are subject to change without notice.

OUTLINE DRAWING



PART NUMBER DEFINITION



PIN OUT INFORMATION

PIN	PIN LENGTH	FUNCTION	DESCRIPTION	PIN	PIN LENGTH	FUNCTION	DESCRIPTION
1-4	MEDIUM	V1	V1 Output	32	MEDIUM	V2 ADJ	V2 Margining
5-12	MEDIUM	RTN	V1 & V2 Return	33	MEDIUM	V2 SENSE	Remote Sense (V2)
13-18	MEDIUM	V2	V2 Output	34	MEDIUM	S RTN	Sense Return
19	MEDIUM	RTN	V3 Return	35	MEDIUM	V1 SHARE	Current Share (V1)
20	MEDIUM	V3	V3 Output	36	MEDIUM	V3 SENSE	Remote Sense (V3)
21	MEDIUM	V4	V4 Output	37	MEDIUM	RESERVED	Not Used
22	MEDIUM	RTN	Signal Return	38	MEDIUM	DEG	Temp. Derate Signal
23	MEDIUM	RESERVED	Not Used	39	MEDIUM	INH	Inhibit
24	MEDIUM	RTN	V4 Return	40	MEDIUM	RESERVED	Not Used
25	MEDIUM	RESERVED	Not Used	41	MEDIUM	V2 SHARE	Current Share (V2)
26	MEDIUM	RESERVED	Not Used	42	MEDIUM	FAIL	Power Fail
27	SHORT	EN	Enable	43	MEDIUM	RESERVED	Not Used
28	MEDIUM	RESERVED	Not Used	44	MEDIUM	V3 SHARE	Current Share (V3)
29	MEDIUM	V1 ADJ	V1 Margining	45	LONG	CGND	Chassis Ground
30	MEDIUM	V1 SENSE	Remote Sense (V1)	46	MEDIUM	ACN/+DC	AC Neutral or +DC Input
31	MEDIUM	RESERVED	Not Used	47	MEDIUM	ACL/-DC	AC Line or -DC Input

Cherokee International reserves the right to make changes to the product(s) or information contained herein without notice. No liability is assumed as a result of their use or application. No rights under any patent accompany the sale of any such product(s) or information.

Cherokee Headquarters

2841 Dow Avenue
Tustin, CA 92780, USA
sales@cherokeepr.com

P: 714.544.6665
F: 714.838.4742

Cherokee Europe

Boulevard de l'Europe, 131
B-1301 Wavre, Belgium
sales@cherokeepr.com

P: +32.10.438.211
F: +32.10.438.212

Cherokee International China

1353 Chenqiao Road, Shanghai Fengpu Industrial Park
Shanghai 201401, China
sales.china@cherokeepr.com

P: 8621.6710.8910
F: 8621.6710.8908

PowerTel India Pvt.

Unit #166, S.D.F.VI (Phase1)
Seepz, Andheri (East)
Mumbai, India 400096

Cherokee India Pvt. Ltd

Unit No. 95 SDF 111 Building
Seepz, Andheri (East)
Mumbai, India 400096